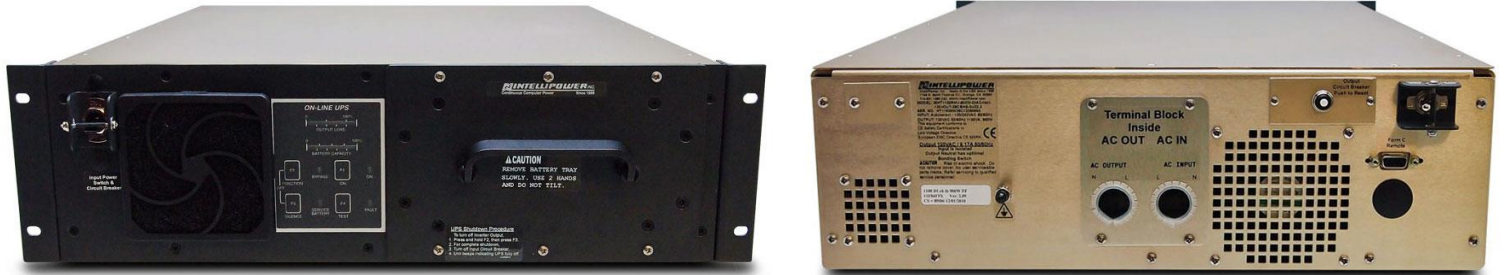


UNINTERRUPTIBLE POWER SYSTEM (UPS)

Double Conversion, On Line, Global Input, Isolated, Extreme High Temperature, Rack Mount UPS for Industrial Applications.



Part # FA00087

Model # IEHT1100RM-I-900W-DiAC-Isol-120vOut-26CBHS-3U22.2

FEATURES AND BENEFITS

Rugged & Extreme Environments

All IntelliPower systems utilize circuit boards, chassis and components that are **specifically designed for extreme environments**. In today's marketplace, repackaged commercial products are often billed as "rugged" and/or "built for harsh environments". Each component in our systems is specifically selected or designed based upon proven performance in harsh indoor and outdoor applications.

Cutting Edge Technology

Our digital double conversion on-line UPS, power conditioner and frequency/voltage converter solutions utilize high-efficiency power switching and galvanic isolation which provides **ideal electrical output performance**. Systems are available with global voltage inputs & outputs, AC inputs & outputs, and DC inputs & outputs. You will be able to utilize any power source.

IntelliPower offers power management software along with many standard communications protocols such as SNMP with OID and MIB Support, RS-232, Ethernet/IP – Common Industrial Protocol (CIP), MODBUS and Dry/Discrete Contacts. The sum total of these technological features equals the ultimate protection for your electronic equipment.

Robust Product Portfolio

No other UPS company offers **2,000+ variations**. Utilizing IntelliPower's building block methodology, more product features and functionality are provided; without having to extend lead times or change proven designs. Over the past 25 years, IntelliPower has developed its electronics hardware, firmware, embedded software and enclosure technology in house, which provides us with a unique capability to meet virtually any of your application requirements to include completely sealed systems.

Designed and Manufactured in the USA

The engineering and technological expertise within IntelliPower has enabled us to develop and field test products since 1988 to **100% user satisfaction**. For you, this translates into shorter lead times from design to shipping as well as personalized service and support. Our mission is to provide you with the highest standard of customer support and quality control.

ISO 9001: 2008 Certified

IntelliPower is committed to customer satisfaction by delivering power system solutions and services that meet or exceed customer requirements through design innovation and continuous improvement.

To find out more about IntelliPower capabilities, please visit our website at www.intellipower.com/capabilities.

CORPORATE HEADQUARTERS

1746 N. Saint Thomas Circle • Orange, CA 92865 USA
Tel: 714.921.1580 • Fax: 714.921.4023
Email: sales@intellipower.com • www.intellipower.com

All products designed and manufactured in the U.S.A.



| Uninterruptible Power System (UPS) | |
|---|---|
| IP Part #: | FA00087 |
| IP Model #: | IEHT1100RM-I-900W-DiAC-Isol-120vOut-26CBHS-3U22.2 |
| Unit Description: | Double Conversion On Line Global Input Isolated Extreme High Temperature Rack Mount UPS for Industrial Applications |
| SPECIFICATIONS | |
| Power Rating (VA, Watts): | 1100 VA, 900 W |
| Input AC Voltage (AC Voltage, tolerance): | 120 or 240 VAC, (-25% to +15%), Auto Select |
| Input DC Voltage (DC Voltage, tolerance): | N/A |
| Input Frequency (Hz, tolerance): | 50 or 60 Hz, (± 3 Hz) |
| Input Max Current (Amps): | 14 Amps |
| Output AC Voltage (AC Voltage, tolerance): | 120 VAC, (± 3 %) |
| Output DC Voltage (DC Voltage, tolerance): | N/A |
| Output Frequency (Hz, follower/changer): | 50 or 60 Hz, Follower |
| Output Sync Requirements: | N/A |
| Enclosure Type & Size (type/rack unit, dimensions): | Rack Mountable 3U, 5.25"H x 17" W x 22.2"D |
| Enclosure Material & Finish (aluminum/steel, finish): | Aluminum |
| Enclosure Airflow (front to rear/front to side/other): | Front-to-rear |
| Enclosure – Special (IP65/Zone 1): | N/A |
| Connector(s) AC Input (type, location): | Terminal strip-screw terminals, Rear Panel behind attached guard plate |
| Connector(s) DC Input (type, location): | N/A |
| Connector(s) AC Output (type, location): | Terminal strip-screw terminals, Rear Panel behind attached guard plate |
| Connector(s) DC Output (type, location): | N/A |
| Connector(s) EBP/Charger (type, location): | N/A |
| Battery Type (rating, PbAcid/Pure PbAcid/Lithium Iron): | 2V8Ah, Pure Lead Acid |
| Battery Total Quantity: | 26 |
| Battery String Voltage: | 52 VDC |
| Battery String (number of strings, quantity per string) | 1, 26 |
| Battery Minimum Run Time (approx. run time at #watts): | 59 minutes at 260 W |
| Battery Mounting (hot swap/fixd): | Hot Swap |
| Temperature: | -20C to +60C Operating |
| Humidity: | 0-95%, Non-Condensing |
| PFC Feature: | Yes |
| Isolation (galvanic isolation/non-isolated): | Galvanic Isolation |
| Application (shipboard/airborne/ground/all): | All |
| Fan Filters (EMI/dust/comboination/grill): | Dust |
| Auto Start (manual start/auto start): | Auto Start |
| Cold Start Switch (yes/no): | No |
| Overload – Shutdown or Bypass (shutdown/bypass, %): | Bypass at 15% Overload |
| Conformal Coated PCBAs (yes/no): | No |
| Communications (SNMP2/SNMP3/RS232, type): | RS232 DE-9 D-subminiature, Opto-Isolated, Rear Panel |
| Communications – Special (CIP/VMware ESX/ESXi/other): | N/A |
| Communications – Discrete (relay/opto, description): | N/A |
| Breaker & Switch Input (type, location): | Toggle Switch, Front Panel |
| Breaker & Switch AC Output (type, location): | Push to Reset, Rear Panel |
| Breaker & Switch DC Output (type, location): | N/A |
| Neutral Bonded to Ground (bonded/un-bonded/switch): | Toggle Switch, Rear Panel |

ISO 9001: 2008 Certified

TAA Compliant



CORPORATE HEADQUARTERS

1746 N. Saint Thomas Circle • Orange, CA 92865 USA
 Tel: 714.921.1580 • Fax: 714.921.4023
 Email: sales@intellipower.com • www.intellipower.com

All products designed and manufactured in the U.S.A.

